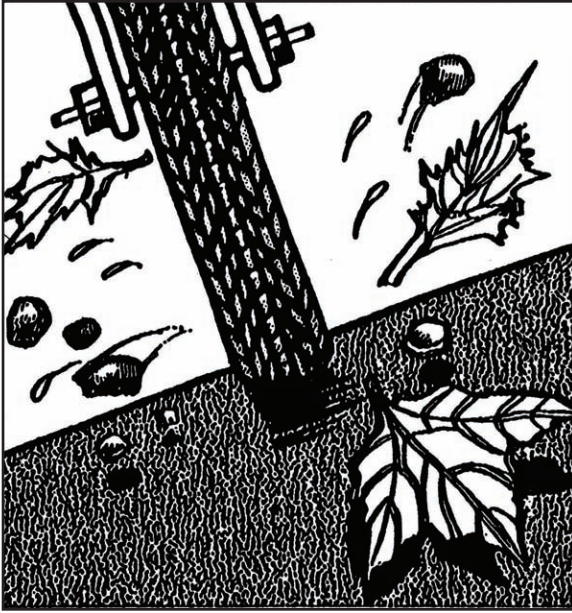
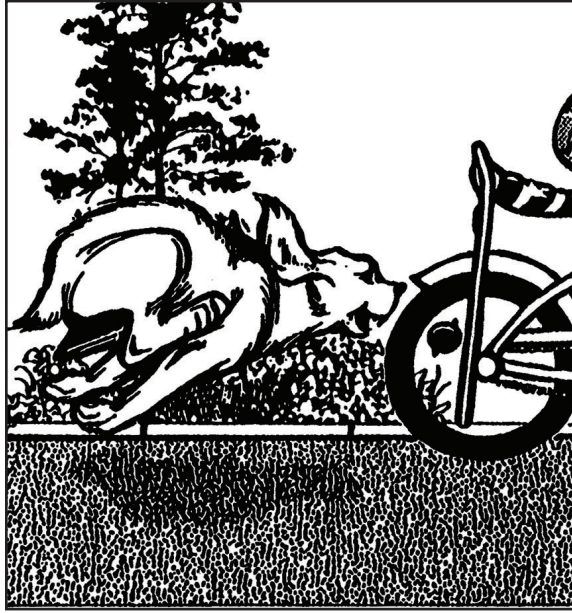


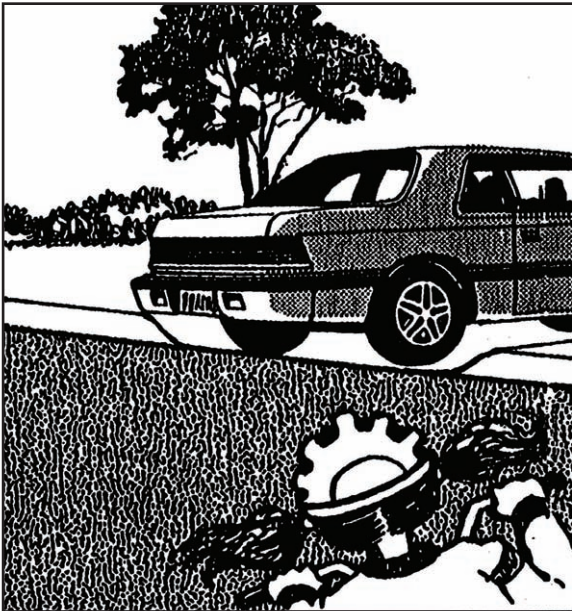
9 *Watch out* for wet pavement, wet leaves and loose gravel.



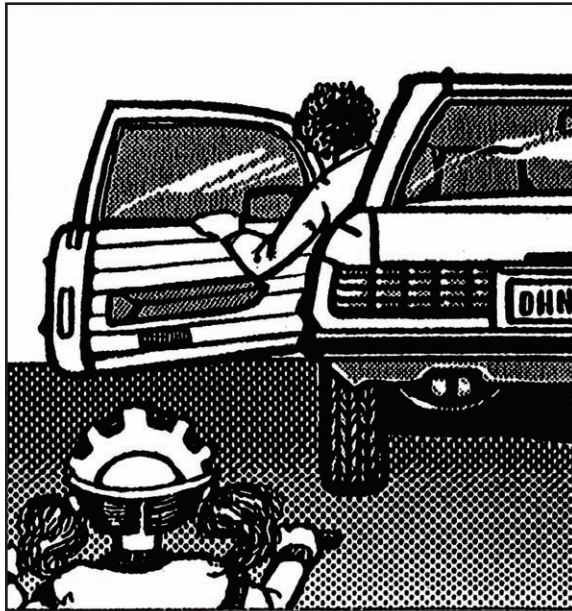
11 *Watch out* for dogs and other animals.



13 *Watch out* for cars leaving driveways.



12 *Watch out* for parked cars opening their doors.

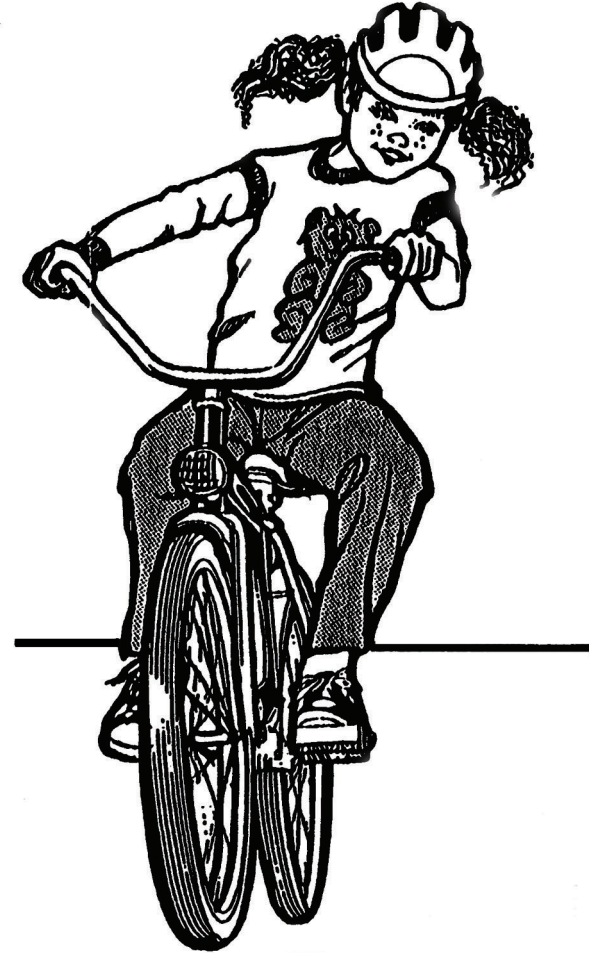


Rules of The Road

- Expect the unexpected.
- Know what your bike can do and cannot do.
- **Inspect** your bike. Don't let a breakdown spoil your day.
- Drive on the right with the flow of traffic. **Never** go against traffic.
- Pedal in single file. It's the best way to go.
- **Don't** weave in and out of traffic or between parked cars.
- Always ride in a straight line.
- **Stop** and **look** in all directions before entering a street from driveways, a curb or another street.
- Maintain control of your bike when traveling downhill. Take it easy.
- Pull completely off the road when you stop to rest or talk.

Maryland State Highway Administration
Bicycle Affairs Coordinator
707 N. Calvert Street
P.O. Box 717
Baltimore, MD 21203
(410) 545-5656
1-800-252-8776
bikes@sha.state.md.us

Tips for Safe Bicycling



Maryland Department of Transportation

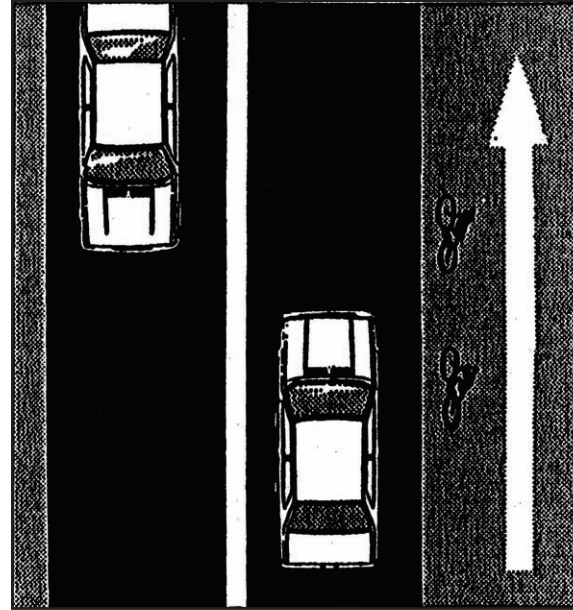
1 Wear a helmet with a **hard** shell.



3 Obey all signs and signals. If you can't read, **don't** ride on public roads.



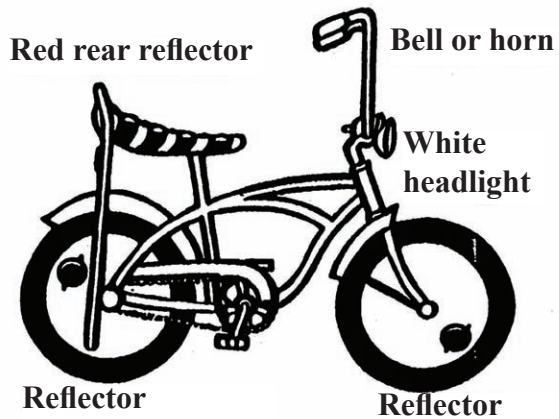
5 Drive with the traffic and in single file.



7 Be **bright** at night. Wear **bright** clothes and make sure you have lights and reflectors on your bike.



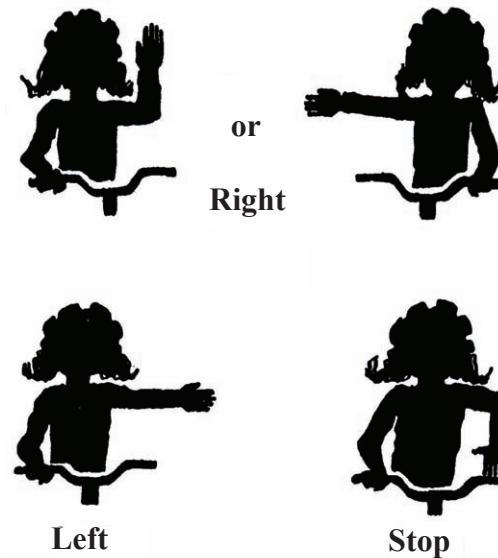
2 Ride a proper size bike. It should have a bell or horn, **reflectors** and a **headlight** for night riding.



4 **Don't** carry passengers on your bike.



6 Signal other roadway users.



8 **Watch out** for storm drains.

