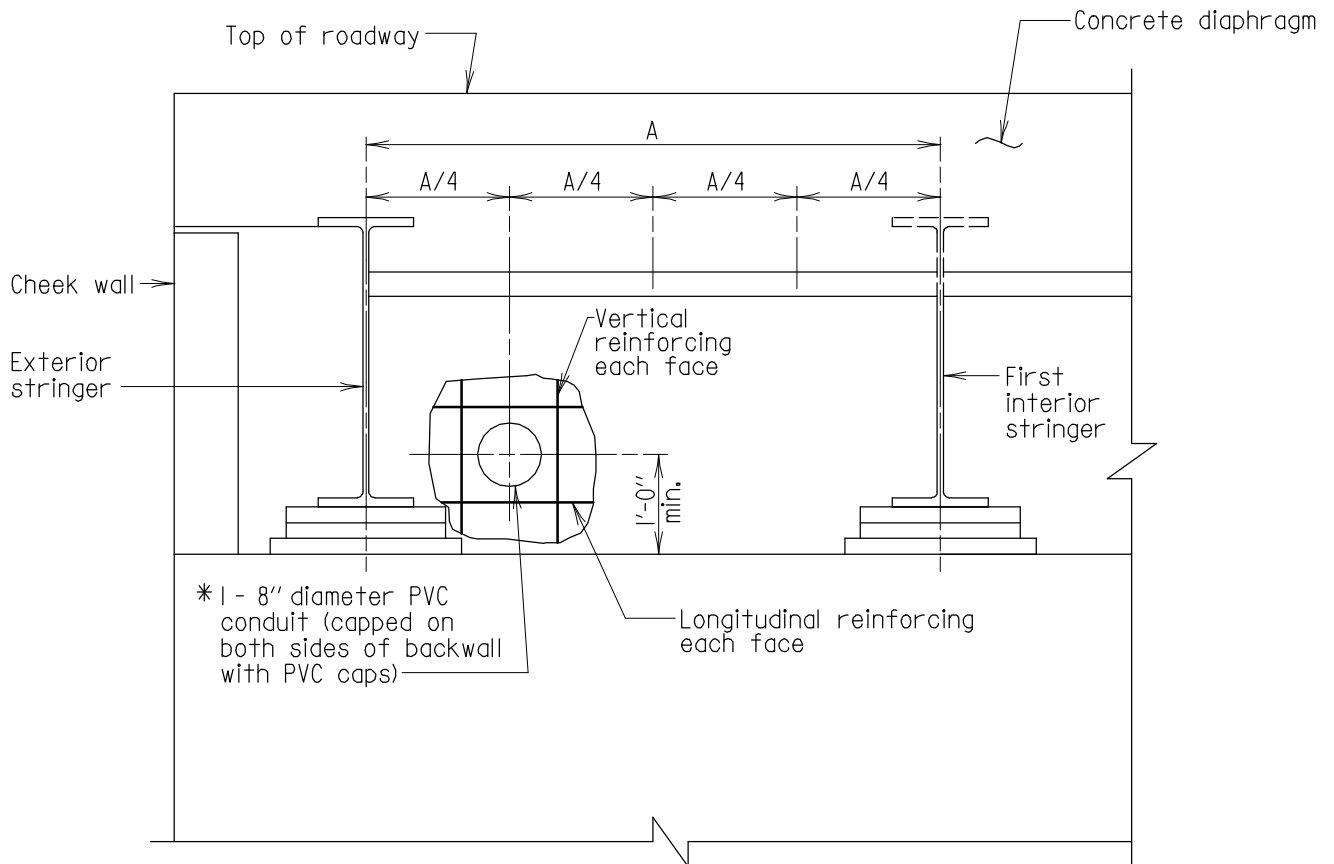


Chapter 02 - Substructure

SECTION 06

UTILITIES (SUB-UTL)



* Conduit shall be placed parallel to the adjacent stringer. Adjust placement of backwall reinforcing to allow conduit to pass through reinforcing as shown.

ELEVATION
Scale: 1/2" = 1'-0"

Notes:

1. Conduits to be at each corner of bridge as located in above detail. On dual bridges the conduits shall be located at all eight locations.
2. Pipe must extend past front face of backwall 6". Pipe to extend from rear face 5 feet beyond endpost/wingwall.
3. For PVC requirements see Section 905.
4. Cost, complete in place, to be incidental to other pertinent bid items.

APPROVAL
<i>L.S. Friedman</i> DIRECTOR OFFICE OF STRUCTURES
DATE: 12-04-2008
VERSION
1.0

STATE OF MARYLAND DEPARTMENT OF TRANSPORTATION STATE HIGHWAY ADMINISTRATION OFFICE OF STRUCTURES
SLEEVES FOR FUTURE UTILITIES AT ABUTMENT BACKWALLS
DETAIL NO. SUB-UTL-101
SHEET <u> </u> OF <u> </u>