

## How to Install and Configure ProjectWise Explorer CONNECT

This document describes how to install ProjectWise Explorer, which is the Windows client component for SHA's engineering document management system.

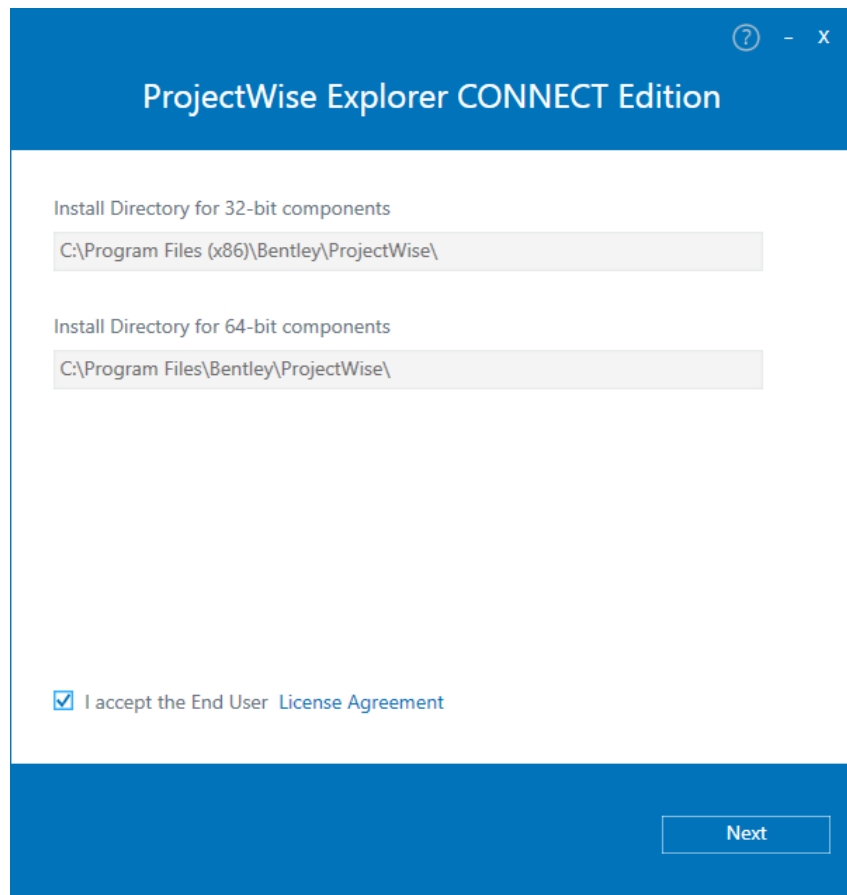
You will need **Administrative** rights on the computer you are installing the system on.

If Microstation and/or Power InRoads will also be on the machine, make sure to install them *before* installing ProjectWise.

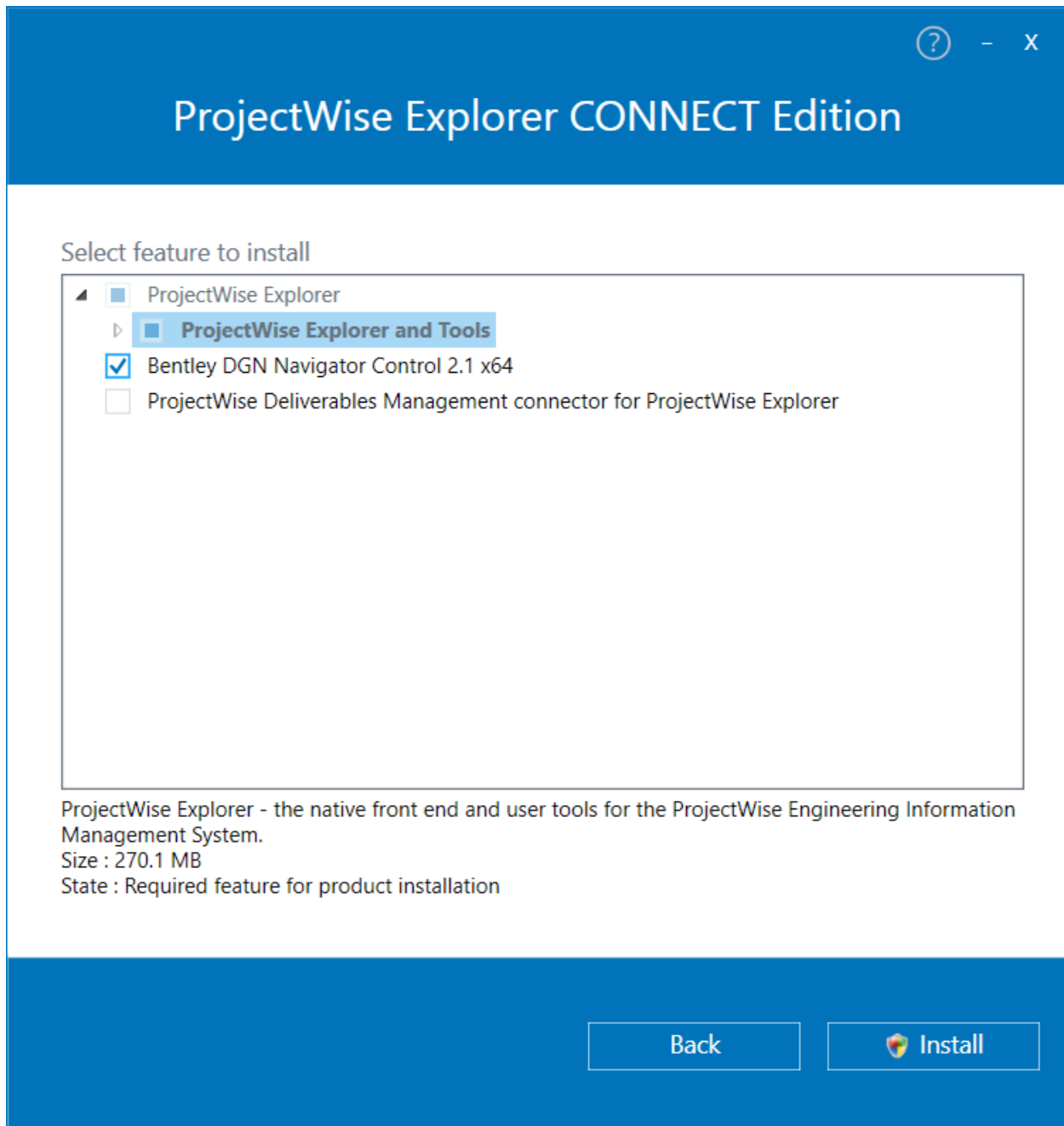
**Note:** If an earlier version of ProjectWise Explorer is already installed on the computer, you do not need to uninstall it before installing this one. The earlier version will automatically be uninstalled as part of the installation process. You will need to manually delete any desktop shortcuts to the earlier version of ProjectWise Explorer.

### Installing ProjectWise Explorer

1. Go to [MDOT SHA's ProjectWise](https://www.roads.maryland.gov/mdotsha/pages/index.aspx?PageId=686) web page:  
<https://www.roads.maryland.gov/mdotsha/pages/index.aspx?PageId=686>
2. Click "**ProjectWise Explorer CONNECT**" and follow the directions provided by your web browser to save the file to your computer.
3. Double-click pwclt100003280en.exe.
4. Check **I accept the End User License Agreement**.
5. Click **Next**.



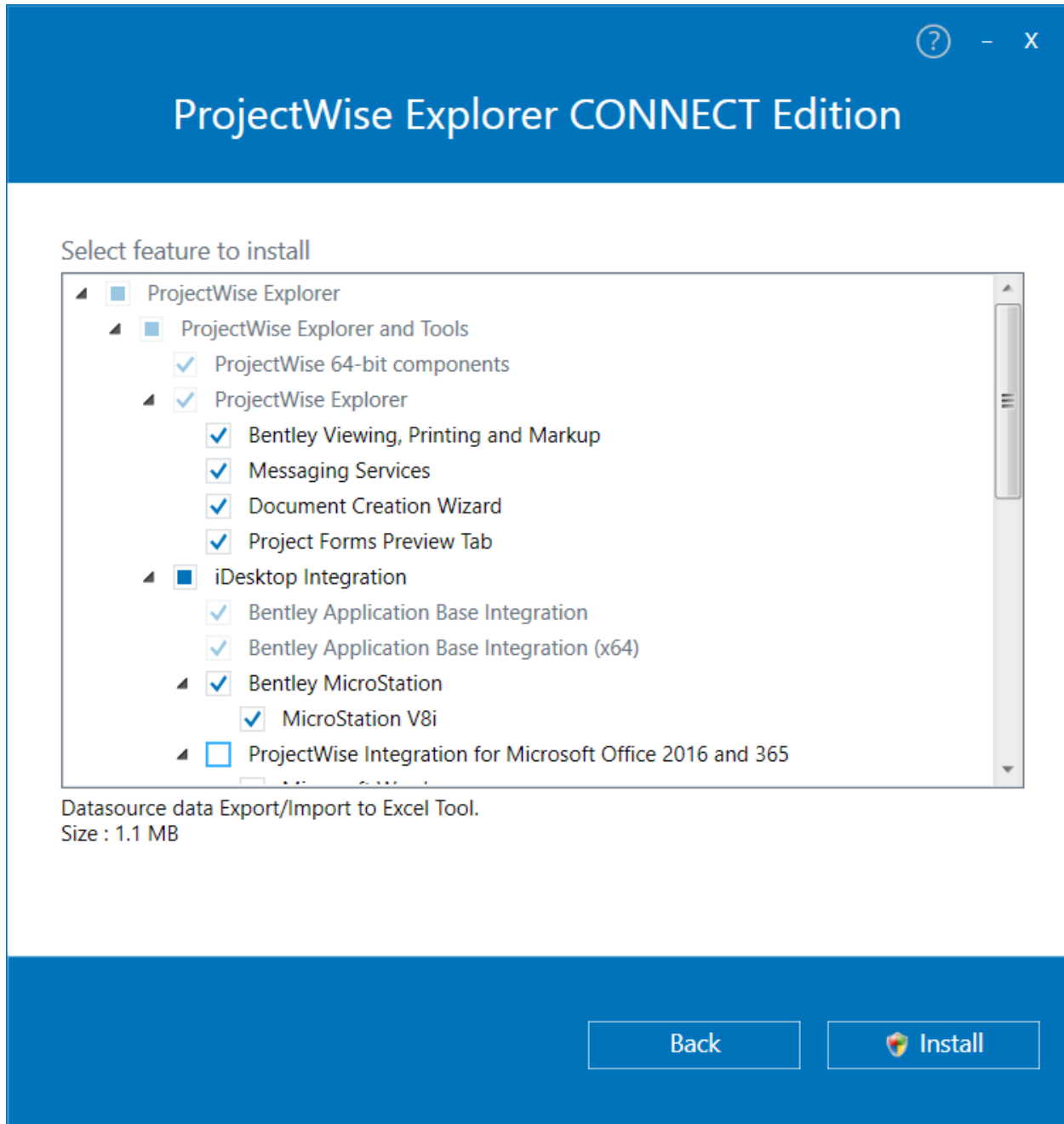
6. If the user uses CAD, check “Bentley DGN Navigator Control 2.1 x64”.



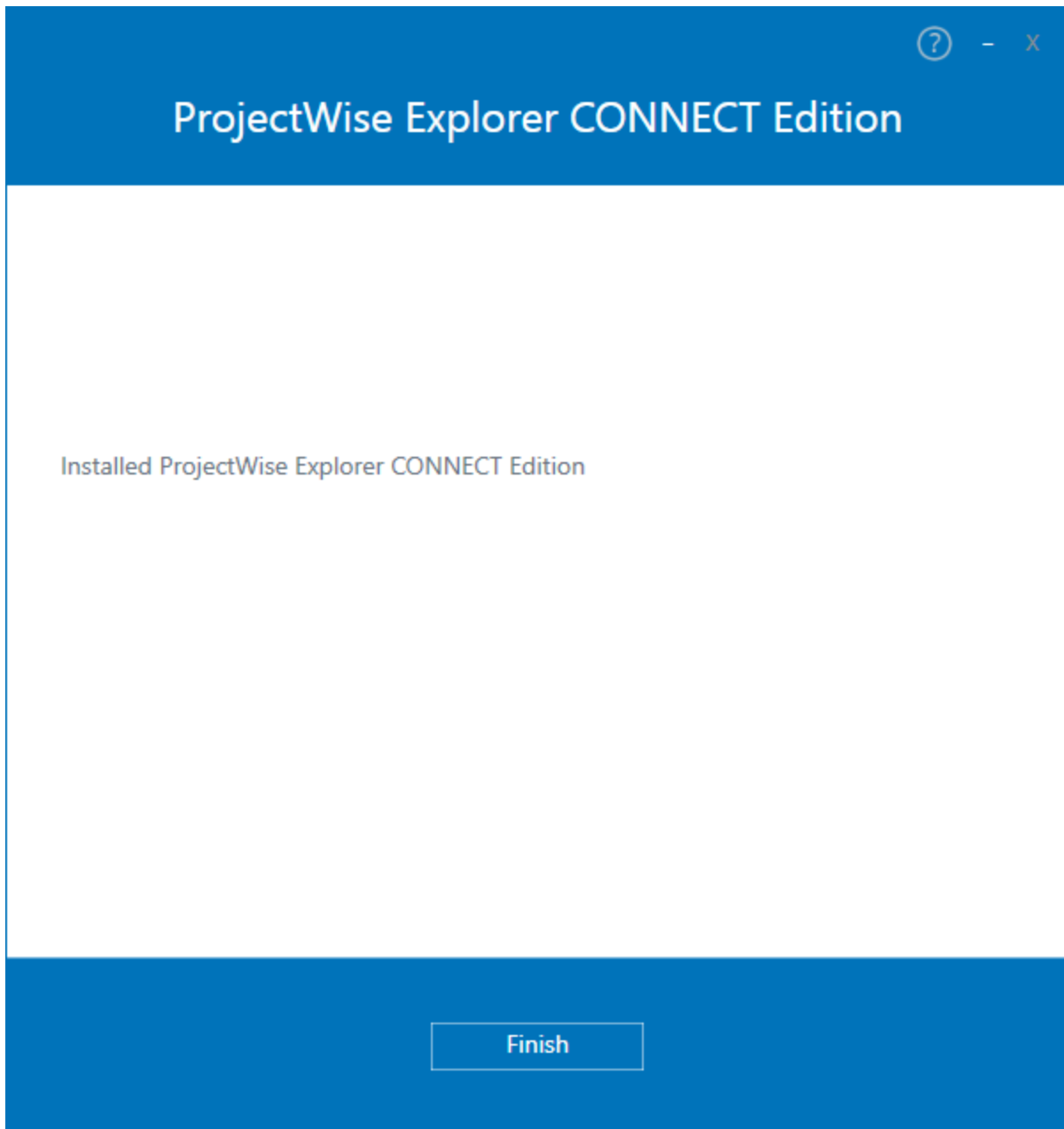
- Click the arrow beside **ProjectWise Explorer and Tools** to expand it.
- If MicroStation is installed, there will be options for **Bentley MicroStation** and **MicroStation V8i**. Make sure both options are checked.

If MicroStation is not installed, these options will be not displayed.

- Uncheck **ProjectWise Integration for Microsoft Office 2016 and 365**.
- Click **Install**.



11. Click **Finish**.



12. If the CONNECTION Client was not already installed on the machine, it will be installed as part of the installation process.

It is not required to log into the CONNECTION Client to use ProjectWise. You can click the "X" on the upper right to close it.

CONNECTION Client

**Bentley**

## Sign In

**Email**

Required field

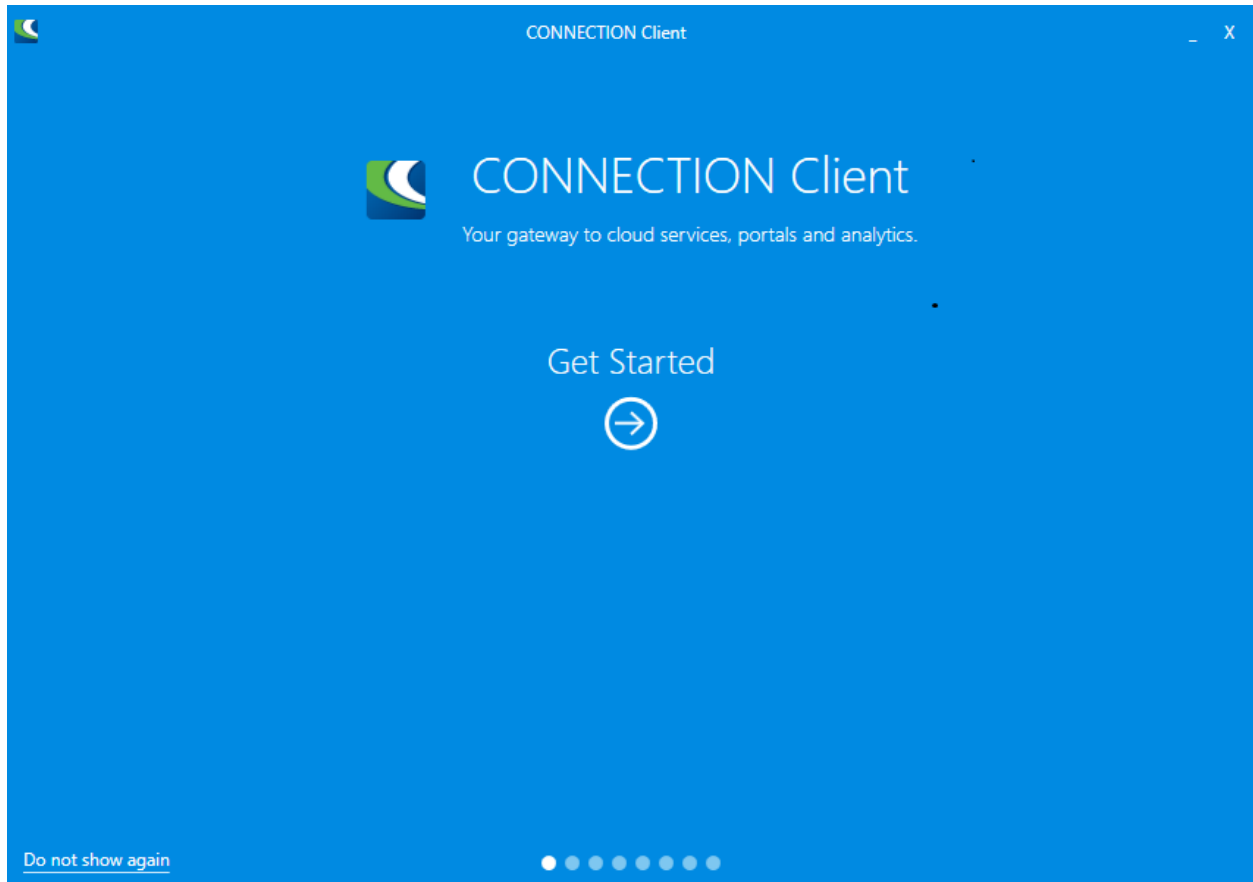
**Password**

**Sign In**

[Why sign in?](#)

Forgot password?  
New User? Register Now

If the CONNECTION Client is installed, it's help menu will also appear. Click "Do not show again" in the left corner to prevent the menu from popping up each time a user logs onto the computer.



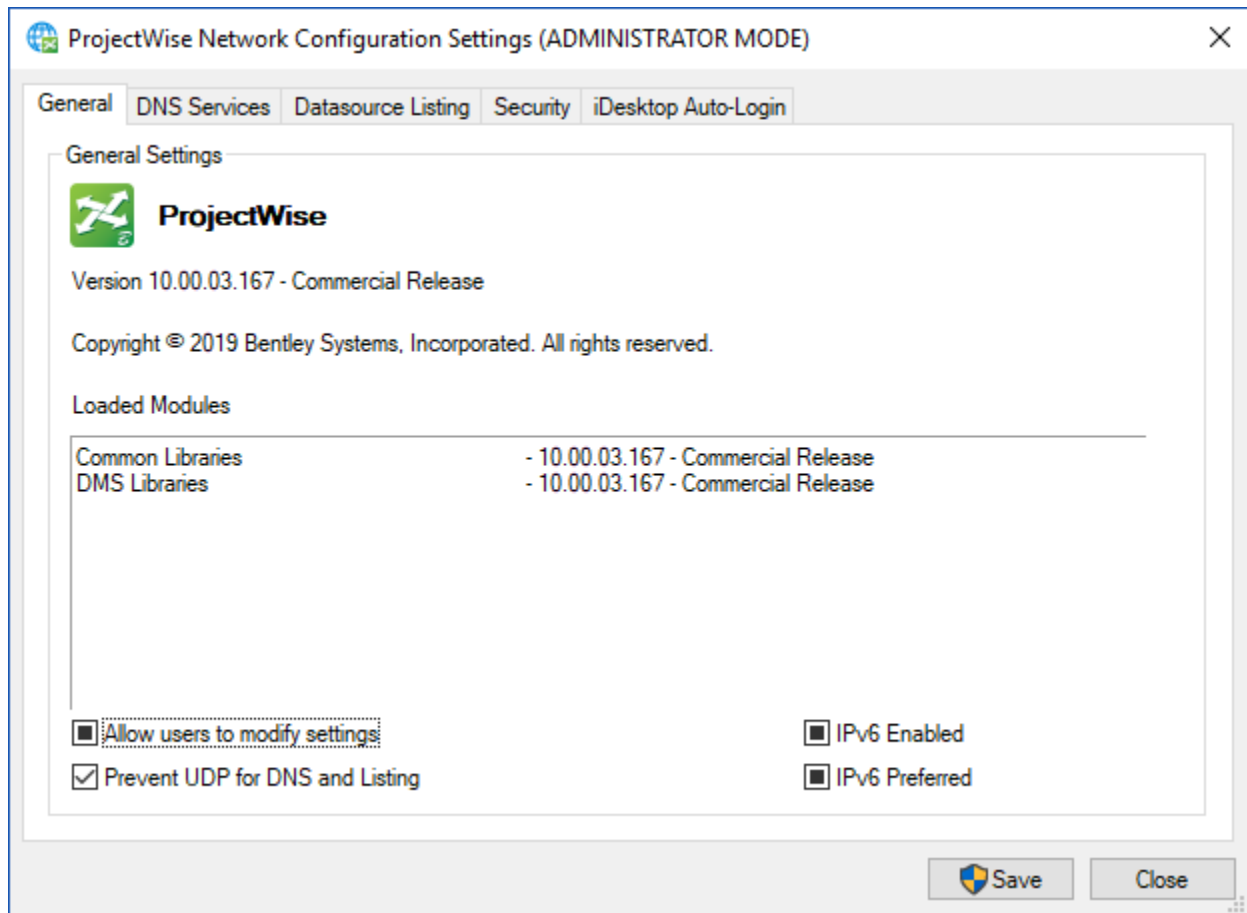
## Configuring ProjectWise Explorer to Access the SHA Datasources

ProjectWise Explorer is essentially a browser. For it to connect to a datasource it needs to know the datasource's address. By configuring ProjectWise you tell it how to find SHA's datasources.

**Note:** If an earlier version of ProjectWise Explorer was installed on the machine prior to installing this version, you DO NOT need to configure ProjectWise Explorer to connect to the SHA Datasources. The network configuration settings were preserved during the upgrade. Skip to step 10 to ensure the network configuration settings still work.

1. Open ProjectWise Explorer.
2. Go to Tools > Network Configuration Settings.

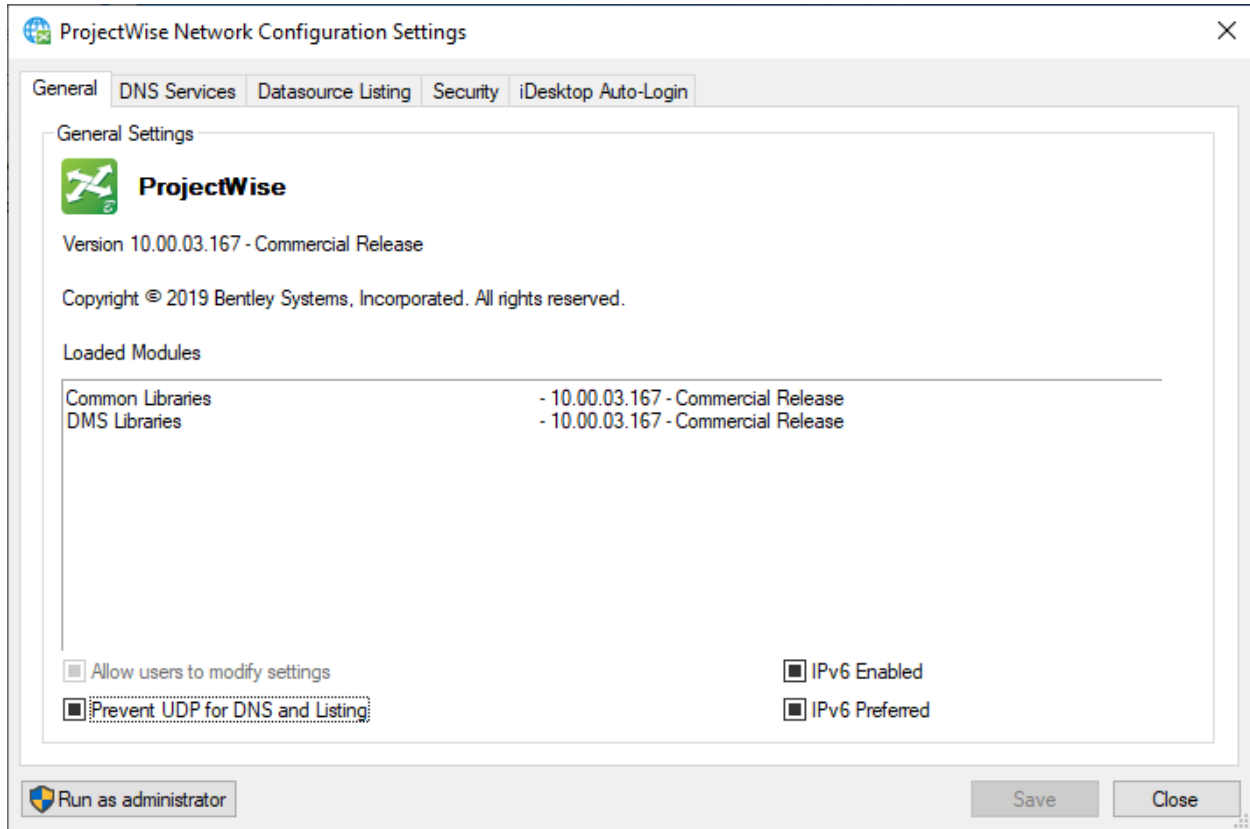
If the menu's title includes "ADMINISTRATOR MODE", any changes you make will apply to all users.\*



\*By default users can change their own network configuration settings in ProjectWise CONNECT. To turn this setting off, open the Network Configuration Settings menu in ADMINISTRATOR MODE and clear the "Allow users to modify settings" checkbox. Click Save.

If the menu's title does not include "ADMINISTRATOR MODE", you will only be able to make changes to the network configuration settings for the user you are logged in as.

To modify the network configuration settings for all users, click the "Run as administrator" button on the lower left. This will open the Network Configuration Settings menu in ADMINISTRATOR MODE.





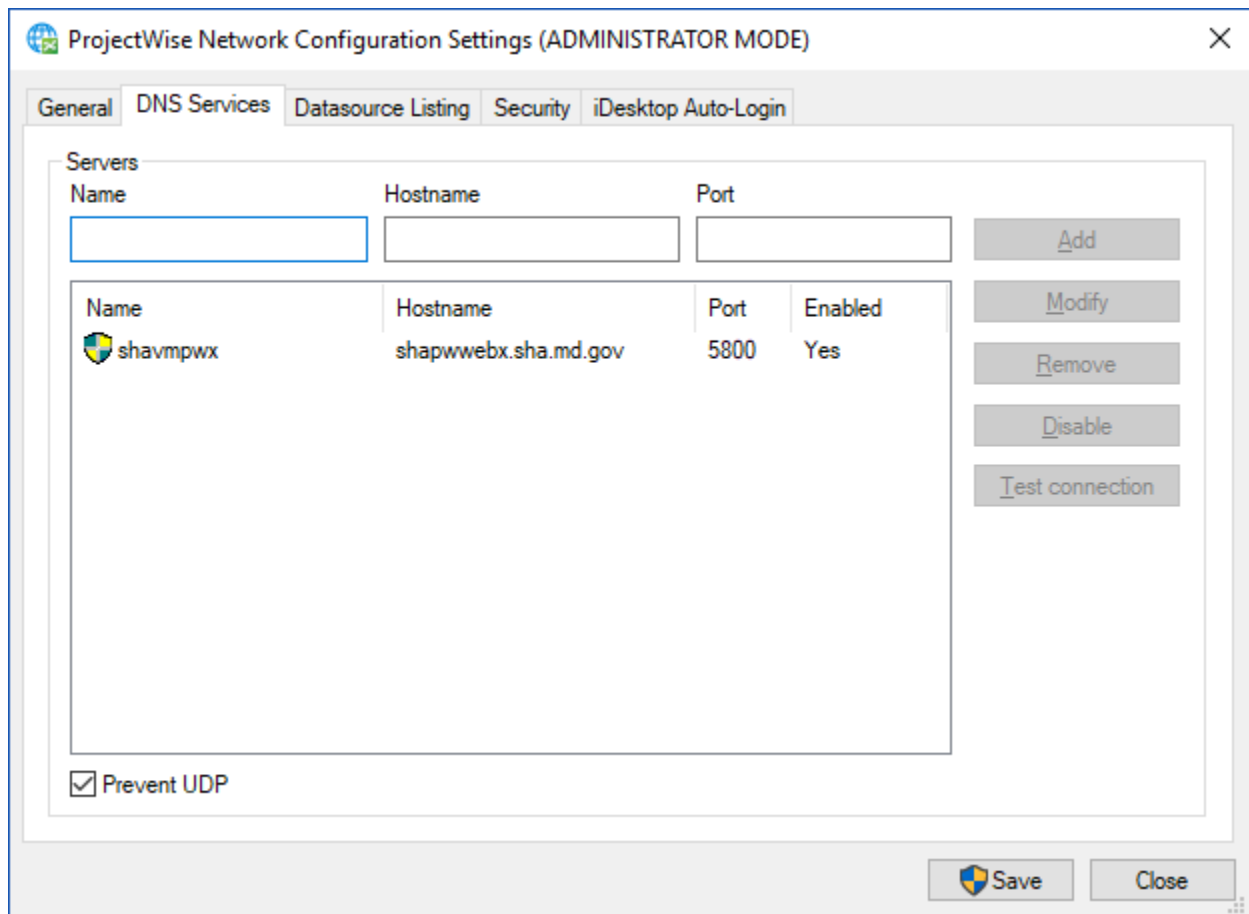
3. Click the **DNS Services** tab and fill in the information as shown in the table below:

Name	Hostname	Port
shavmpwx	shapwwebx.sha.md.gov	5800

4. Click **Add**.

**Note:** If a network configuration setting is added to the menu when it's open in ADMINISTRATOR MODE, it will have a shield icon beside it. See the screenshot below.

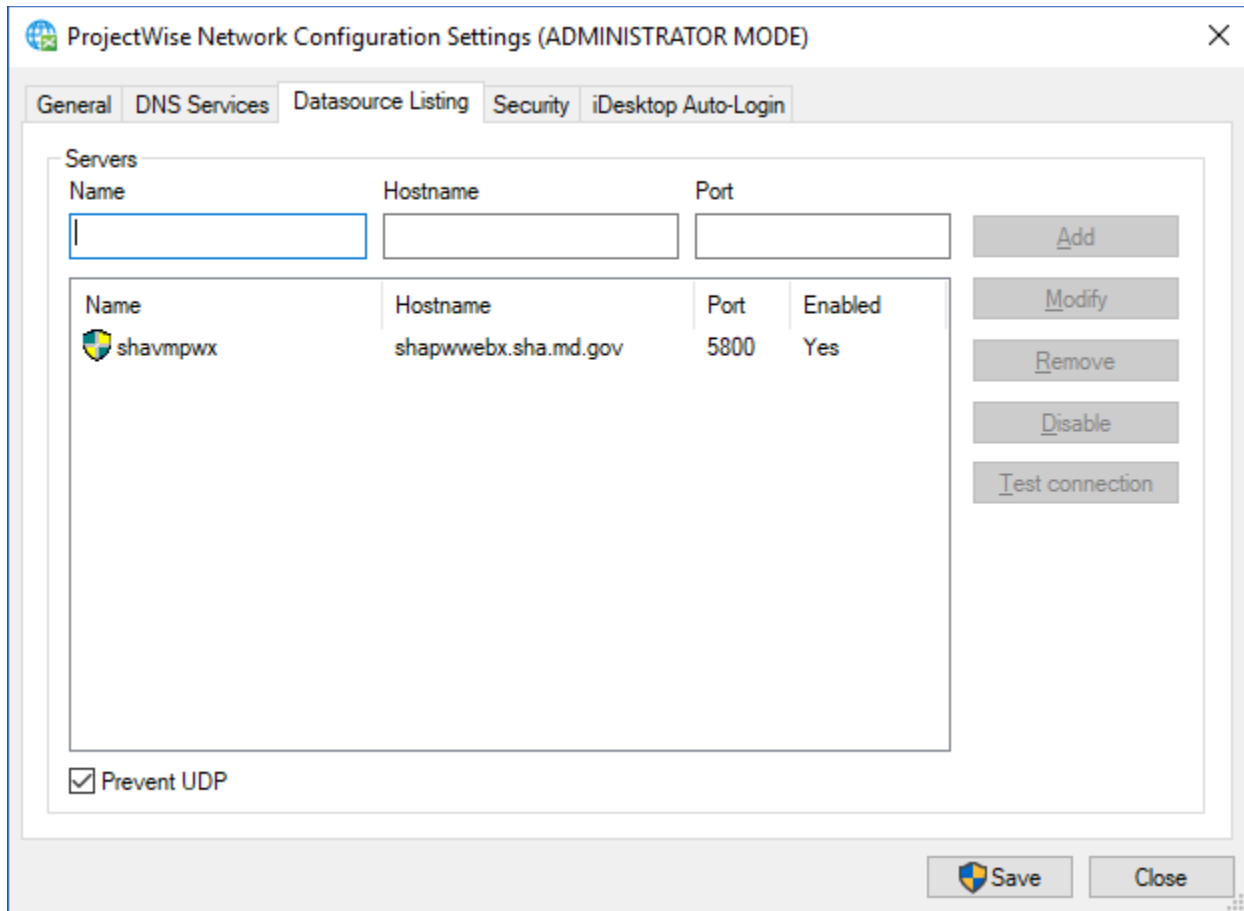
If a network configuration setting is added to the menu when it's not in "ADMINISTRATOR MODE", it will have no icon.



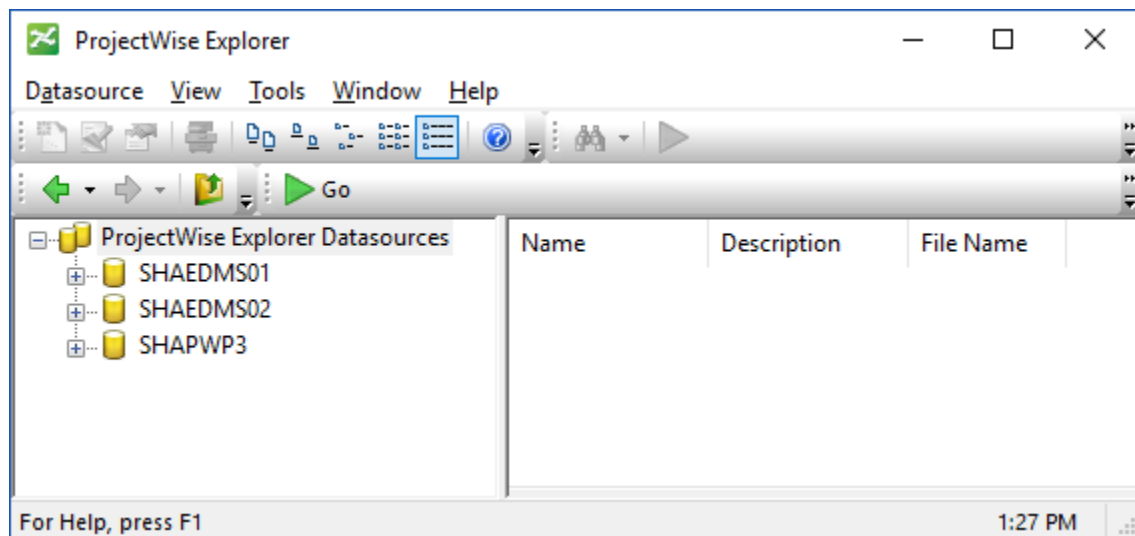
5. Click the **Datasource Listing** tab and fill in the information as shown in the table below:

Name	Hostname	Port
shavmpwx	shapwwbx.sha.md.gov	5800

6. Click **Add**.



7. Click **Save**.
8. Click **Close**.
9. Close ProjectWise Explorer.
10. Reopen ProjectWise Explorer. You should see **SHAEDMS01**, **SHAEDMS02**, and **SHAPWP3** on the left. If you do not see the datasources, proceed to [If the Datasources Do Not Display](#).



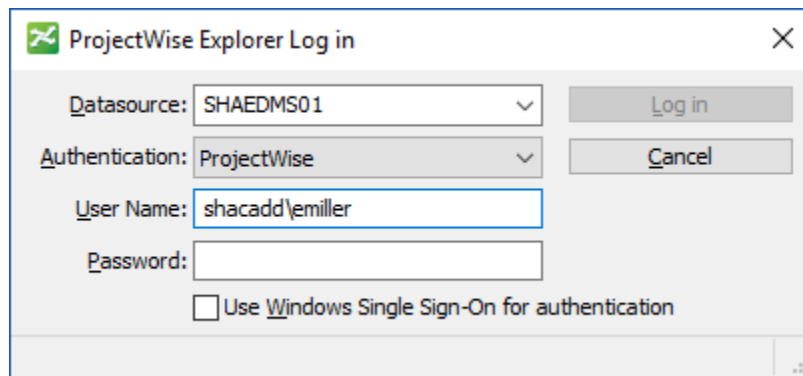
11. A ProjectWise account is required to log into a datasource.

If you have submitted a “[MDOT SHA Third Party ProjectWise Account Request](#)” form, you should receive an email with your username and password. The email will include the datasources you have access to.

If your ProjectWise account is linked to your SHA account, your username and password are the same as your SHA account. You can log into ProjectWise offsite by adding “SHACADD\” in front of your username.

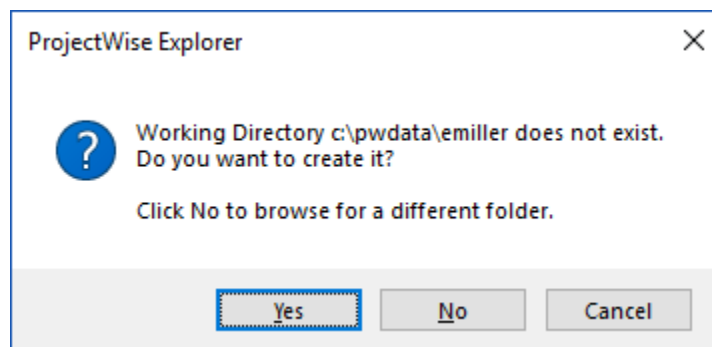
- If you are not a member of the P3 project, you will have access to **SHAEDMS01** and **SHAEDMS02**.
- If you are a member of the P3 project, you will have access to **SHAPWP3**.

To log into a datasource, double-click it and enter your username and password.



12. The first time you log into a datasource on a computer you will be asked about your working directory. This is where ProjectWise downloads copies of the documents you open to your local computer.

A default location has been set up for you. Click **Yes**.

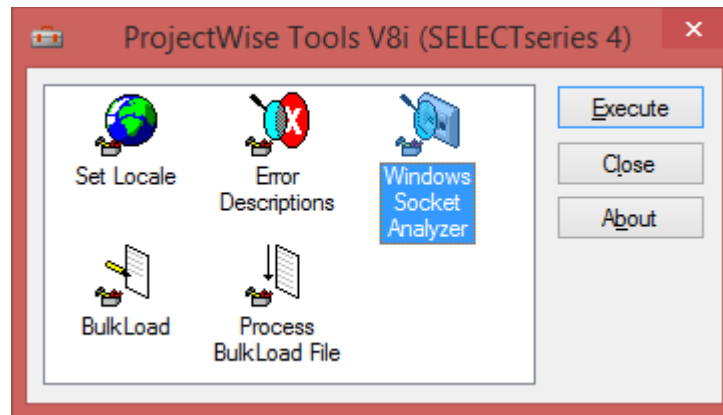


## ***If the Datasources Do Not Display***

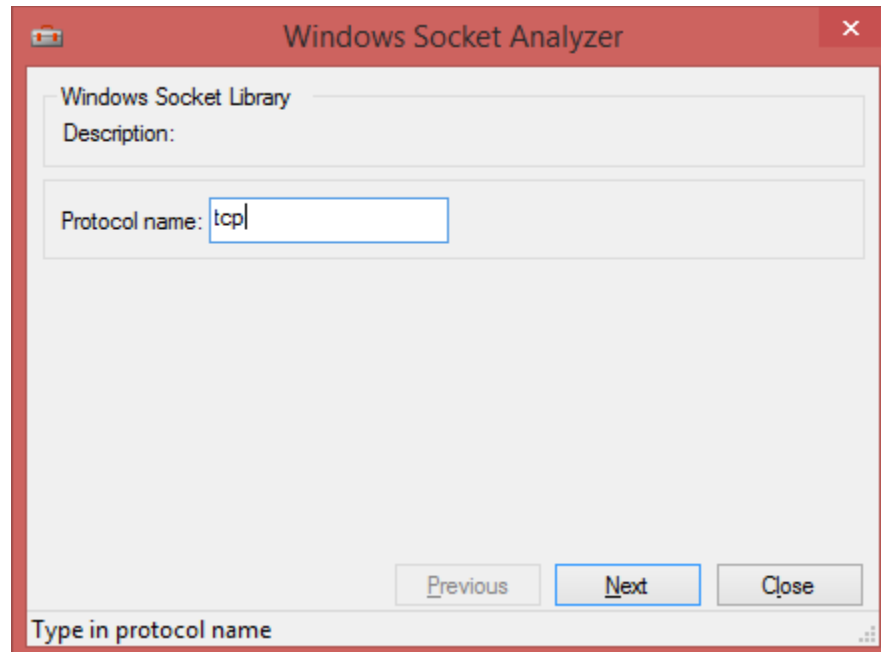
First check that ProjectWise is configured correctly. If so, then the connection between it and the datasources' server is blocked. Check that your computer is connected to the Internet and that the server, as configured in ProjectWise, is allowed through the firewall.

Port 5800 must also be open. The steps below show how to check if the port is open or not.

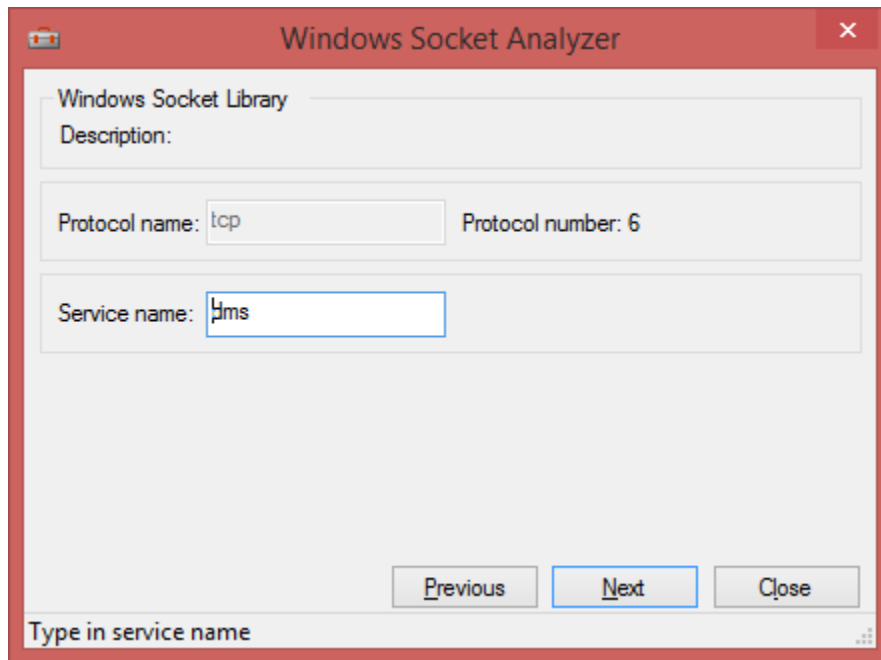
1. Go to **Start > Bentley > User Tools**.
2. Select **Windows Socket Analyzer** and click **Execute**.



3. Click **Next**.

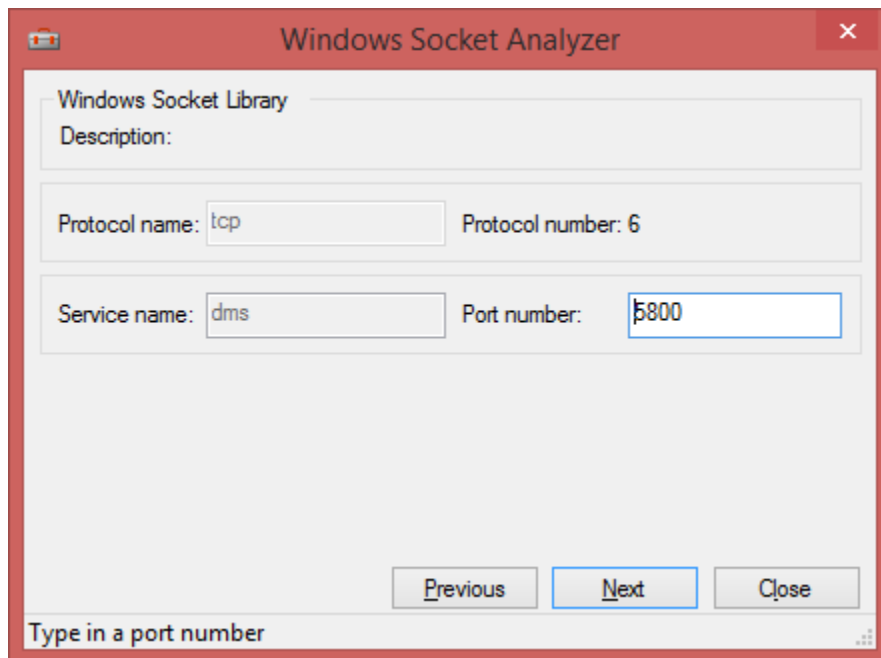


4. Click **Next**.



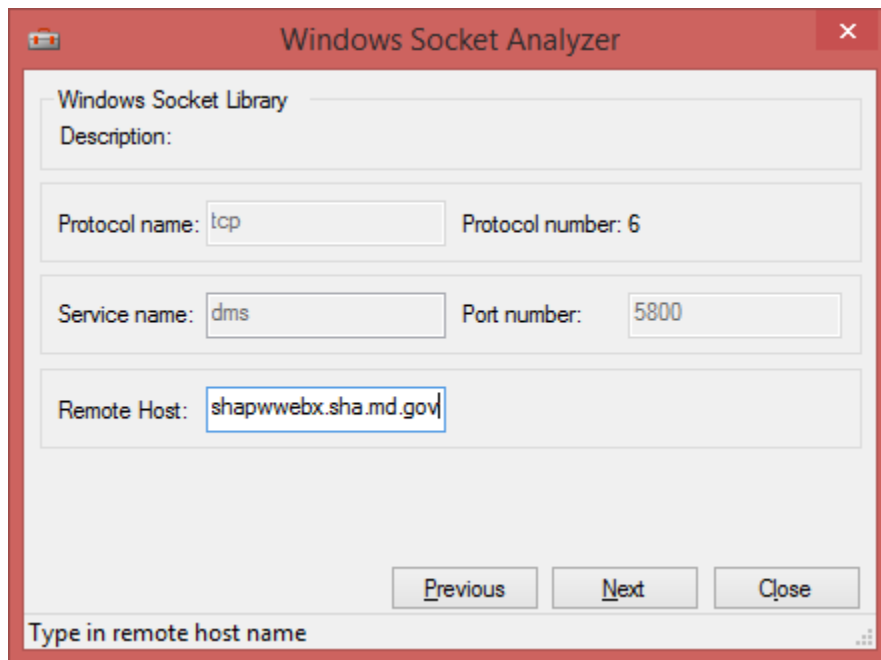
The screenshot shows the 'Windows Socket Analyzer' window. The title bar is red with a close button. The main area is light gray. At the top, there is a section labeled 'Windows Socket Library' with a 'Description:' label. Below this, there are two input fields: 'Protocol name:' containing 'tcp' and 'Protocol number:' containing '6'. Underneath, there is a 'Service name:' label followed by an input field containing 'dms'. At the bottom right, there are three buttons: 'Previous', 'Next' (highlighted with a blue border), and 'Close'. At the very bottom, there is a status bar that says 'Type in service name'.

5. Click **Next**.

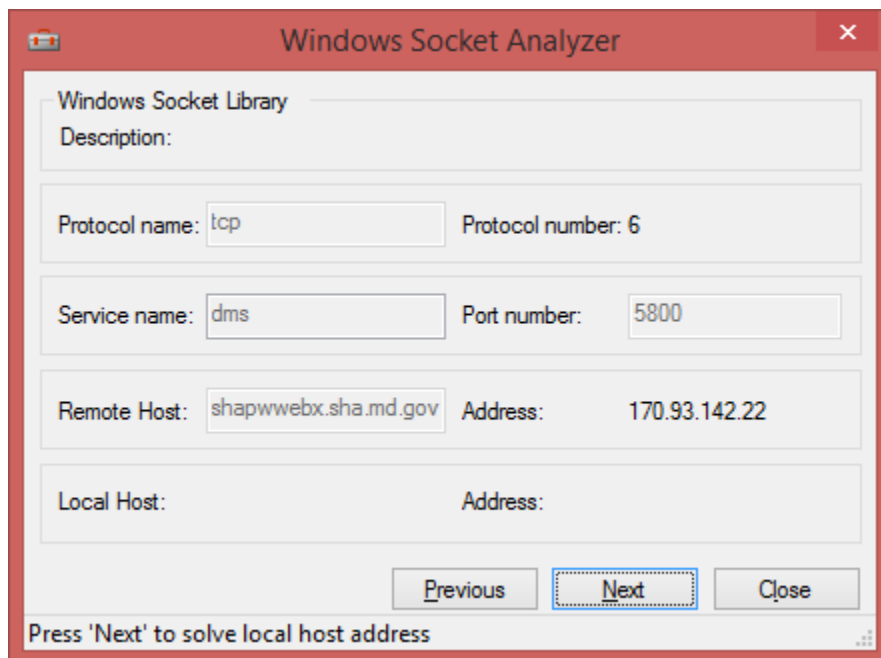


The screenshot shows the 'Windows Socket Analyzer' window. The title bar is red with a close button. The main area is light gray. At the top, there is a section labeled 'Windows Socket Library' with a 'Description:' label. Below this, there are two input fields: 'Protocol name:' containing 'tcp' and 'Protocol number:' containing '6'. Underneath, there are two input fields: 'Service name:' containing 'dms' and 'Port number:' containing '5800'. At the bottom right, there are three buttons: 'Previous', 'Next' (highlighted with a blue border), and 'Close'. At the very bottom, there is a status bar that says 'Type in a port number'.

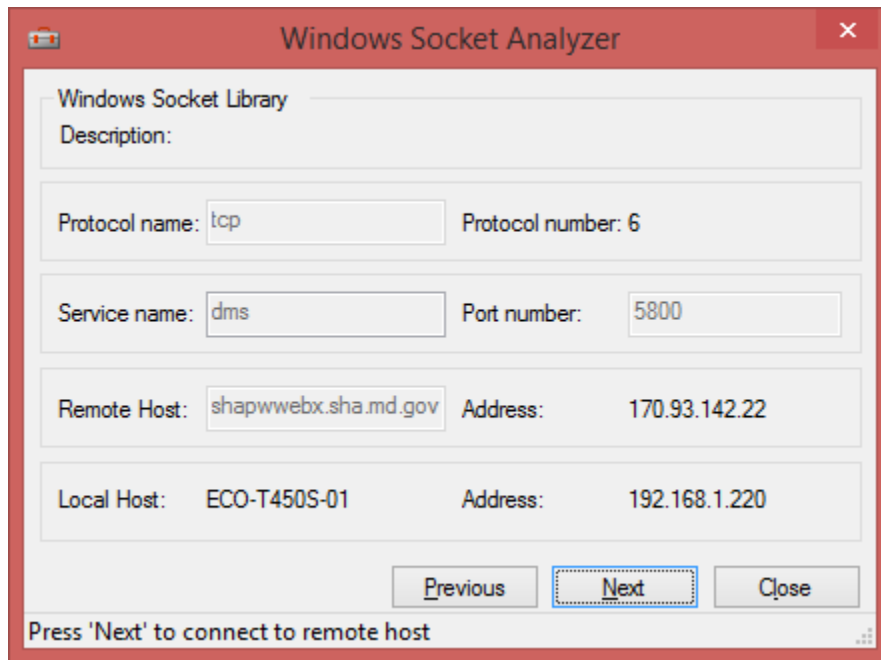
6. Enter **shapwebx.sha.md.gov**.
7. Click **Next**.



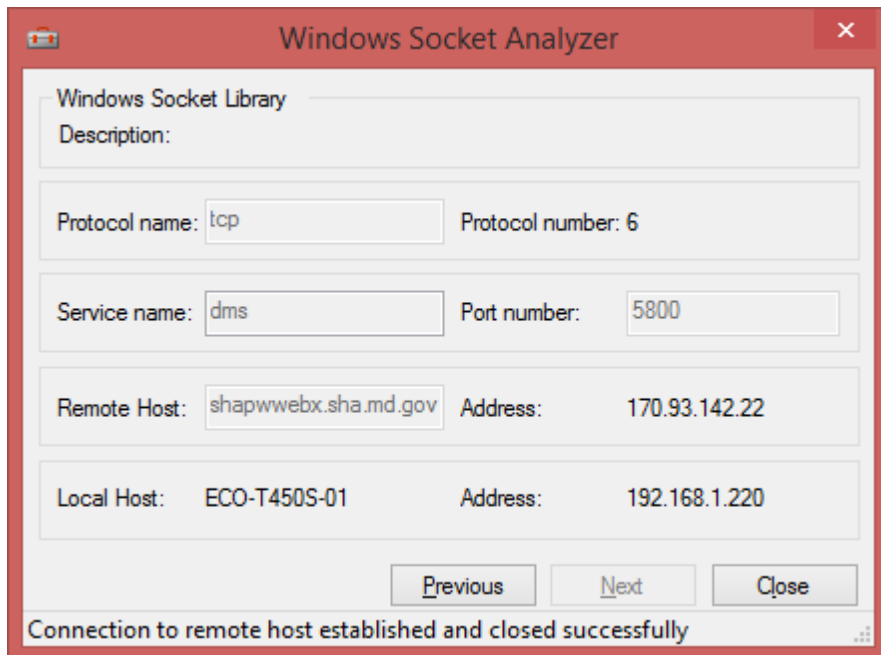
8. Click **Next**.



9. Click **Next**.



10. You should connect successfully, as shown below. If not **Port 5800** may not be open. Close ProjectWise and open **Port 5800**. Reopen ProjectWise. The datasources should be displayed.





11. Reopen ProjectWise. The datasources should be displayed.

