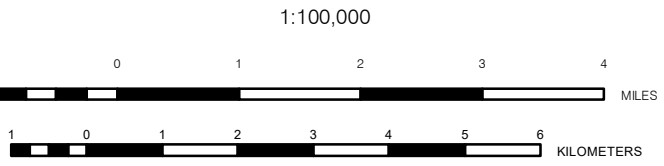


**GENERAL HIGHWAY MAP
DORCHESTER
COUNTY
MARYLAND**

POPULATION 32,618 (2010)

PREPARED BY THE
MARYLAND DEPARTMENT OF TRANSPORTATION
STATE HIGHWAY ADMINISTRATION

IN COOPERATION WITH THE
UNITED STATES DEPARTMENT OF TRANSPORTATION
FEDERAL HIGHWAY ADMINISTRATION



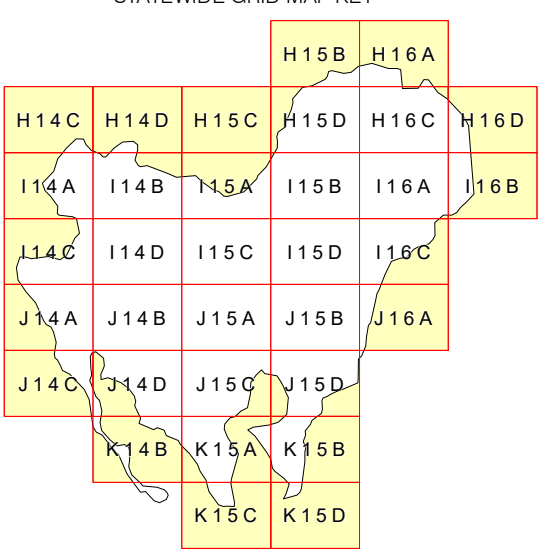
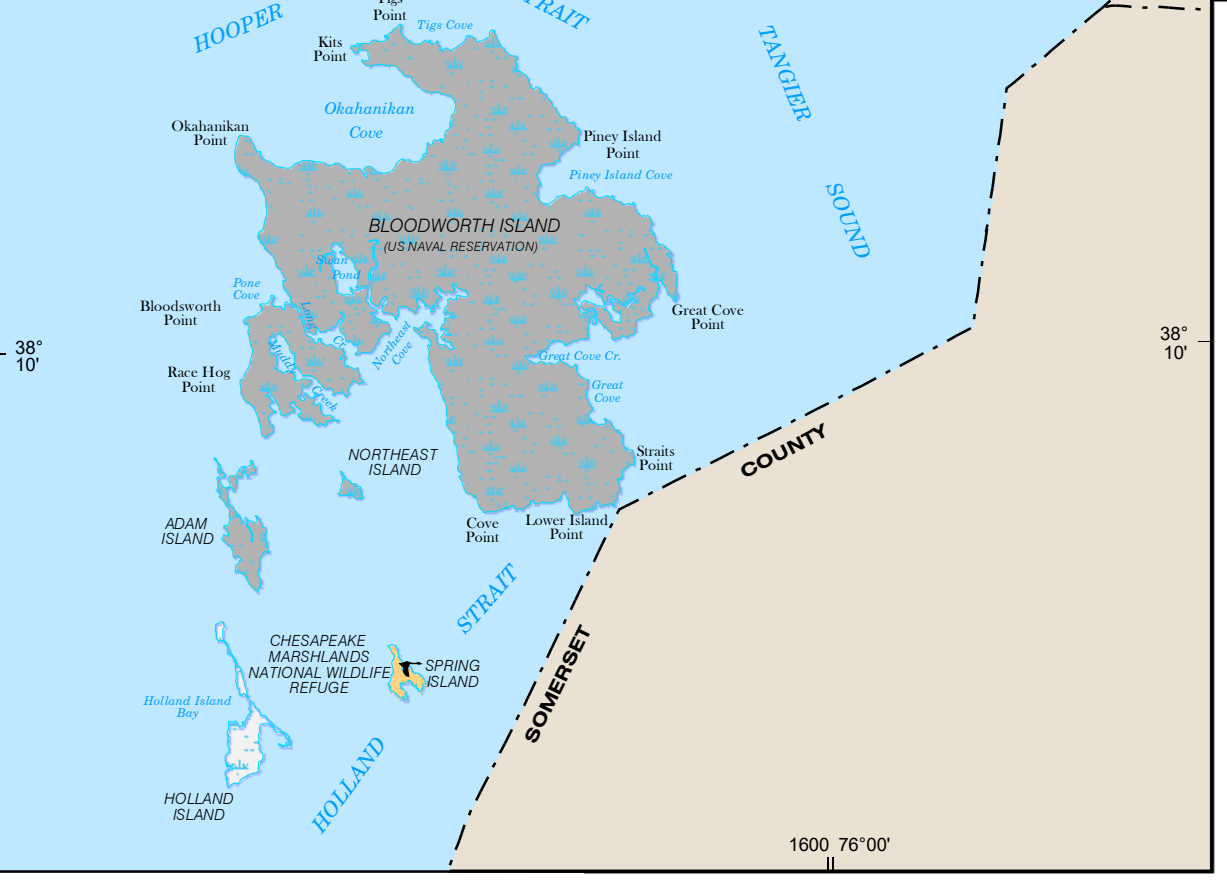
PUBLISHED: 2021

LAMBERT CONFORMAL CONIC PROJECTION

THE CULTURAL FEATURES SHOWN ON THIS MAP ARE FOR LOCATING PURPOSES ONLY AND MAY NOT REFLECT ACTUAL CONDITIONS.

DIGITAL COPIES OF THIS MAP ARE AVAILABLE FOR PUBLIC USE FROM THE STATE HIGHWAY ADMINISTRATION BY VISITING OUR WEB SITE AT WWW.ROADS.MARYLAND.GOV

THIS MAP WAS CREATED USING MARYLAND STATE PLANE COORDINATE 8000 FOOT GRID VALUES BASED ON THE 1983 NORTH AMERICAN DATUM (NAD) TICS.



LEGEND

- | | |
|-------------------------------|-----------------------------------|
| HIGHWAY CLASSIFICATION | RAILROADS |
| Interstate Toll Highway | Standard Tracks with Station/Stop |
| Interstate Highway | Rapid Transit-Inter Urban |
| U.S. Highway | Overpass-Underpass |
| HIGHWAY DESIGNATION | AREA DESIGNATION |
| Interstate Highway | Incorporated City |
| U.S. Highway | Forest, Park, Recreation Area |
| State Highway | Federal, Military Reservation |
| Interchange Exit | Reservation |
| County Road | State Capital |
| County Road | County Seat |
-
- | | |
|----------------------------|--|
| ROADSIDE CULTURE | ROADSIDE CULTURE |
| Airport | Fire/Rescue |
| Armory | Garage/SHA/County/Municipal |
| Camping Facility | Golf Course/Country Club |
| City/Town Hall | Hospital w/24 hour Emergency Room |
| College/University | Library |
| Community College | Lighthouse |
| Commuter Station w/Parking | Light Rail |
| County Police | MD Motor Vehicle Administration |
| Courthouse | MD Dept. of Agriculture Farmers Market |
| Metro (MTA) | Metrolink (WMATA) |
| Park and Ride | Post Office |
| Prominent Peak w/Elevation | State Police |
| Welcome Center | Wildlife Area (State) |
| Wildlife Area (Federal) | |